

# INTERNACIONAL LOGISTICA EN INYECCIÓN



## ILI PLASTICS

Camí Vell de Silla nº14,  
46469 Beniparrell.  
Valencia, España

## ISN GROUP

Ctra. Echauri Nº9  
31160 Orcoyen  
Navarra, España

**ILI Plastics S.L. (International Logistic in Injection)** is a company that was created from the succession of a leading business group in the Valencian Community. This new company has a work center, located in Beniparrell (Valencia).

Our main activity is the **injection of thermoplastics and assembly of components for the automotive industry**, manufacturing serial parts such as TIER 1 and 2 for various OEMs in the Automotive Sector.

The root from which it was born is a consolidated company, a reference in the sector and that has more than 45 years of experience, both in the design and construction of the mold, as well as in the injection of parts and assembly of components.

**ILI Group S.L. It is a strategic supplier for several Tier 1 and OEMs such as Ford and the VW consortium (VW, SEAT, Audi and Sköda).**

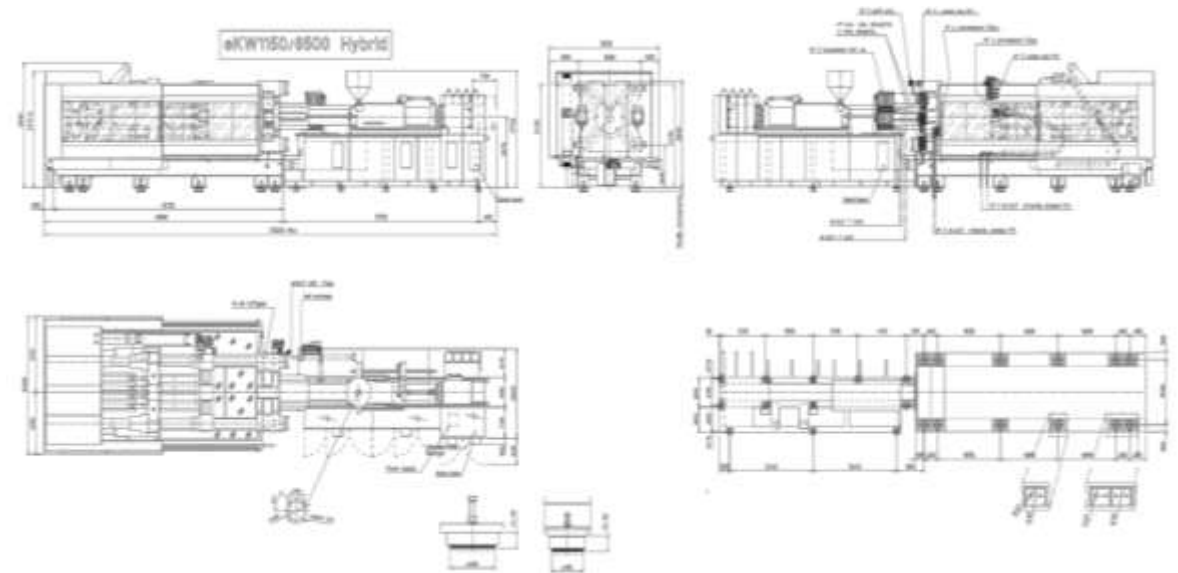
In addition, it has the **IATF 16949** Automotive Quality Technical Specifications, **ISO 14001** for the Environment, **ISO 9001**, **Formel Q** (SEAT-VW) and **Q1** (Ford). Likewise, it is approved to do Design, Engineering and Development work.

The purpose of the company is to offer its clients the **Maximum Quality** in its products and services, in an **excellent professional work environment**, with the **Maximum Efficiency** and at the **Lowest Cost**.

# INDEX

---

1. Location.
2. Facilities | Lay-Out.
3. Technologies
4. Equipment
5. Design tools/ Project Management.
6. Organization chart / Structure

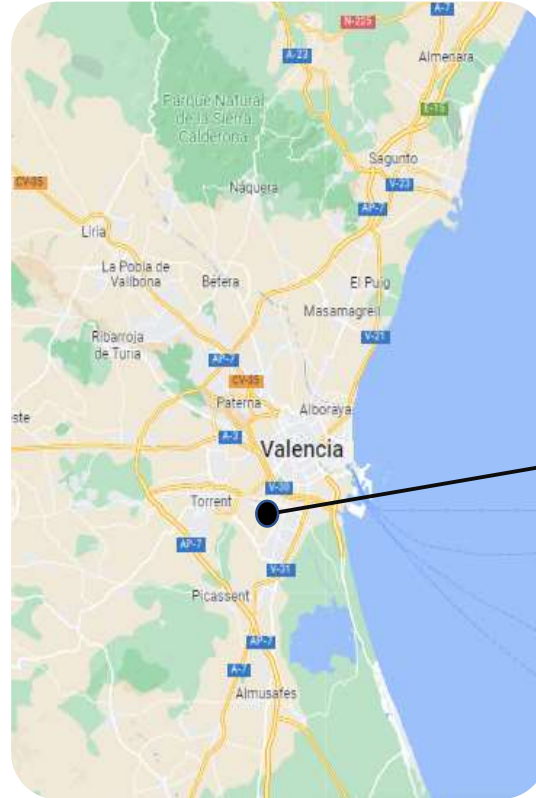


# 1. LOCATION



## Main near airports:

Aeropuerto de Valencia: 21Km  
Aeropuerto de Alicante: 122Km  
Aeropuerto de Castellón: 101 Km  
Aeropuerto de Barcelona: 300Km  
Aeropuerto de Madrid: 296Km

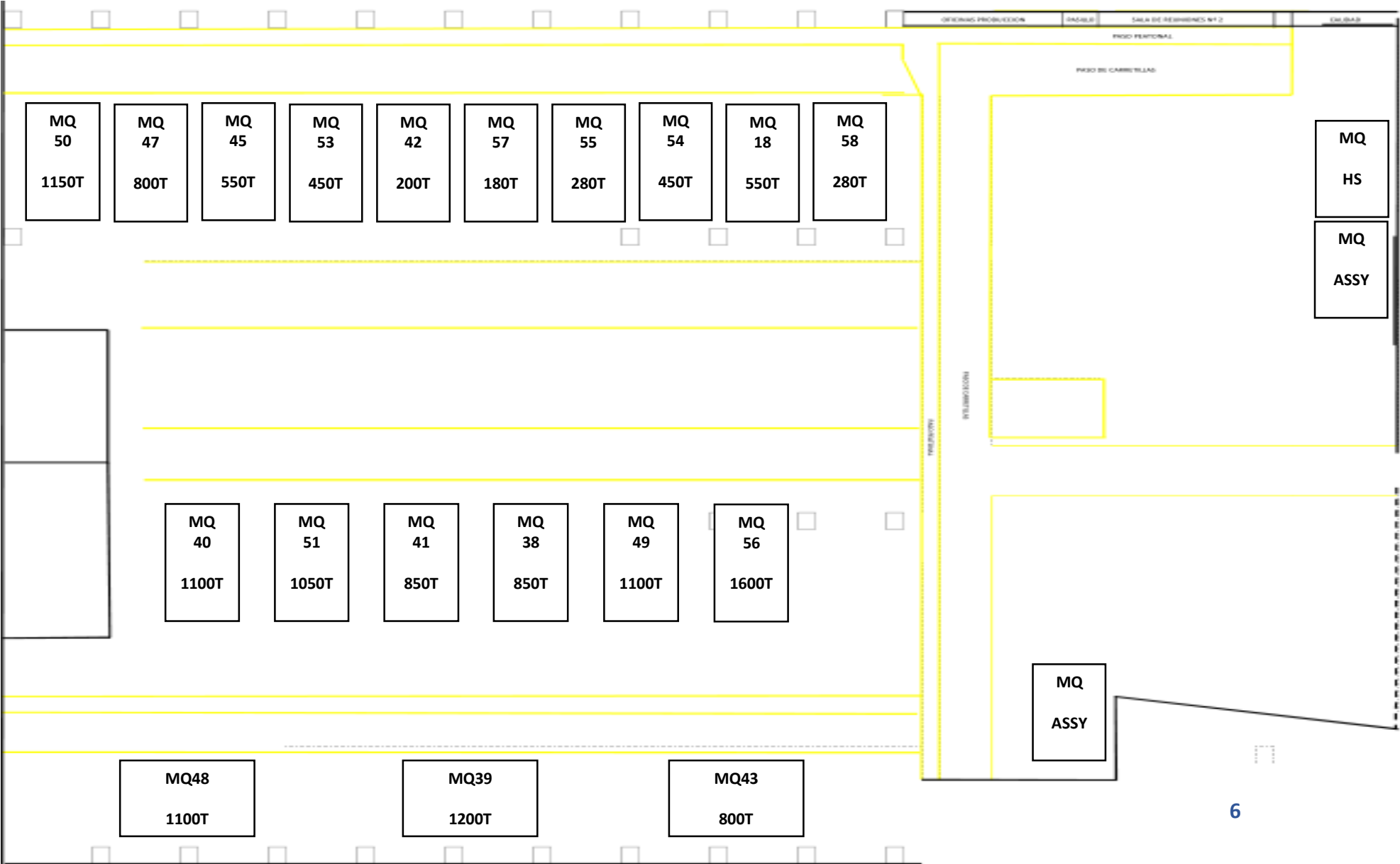


## **INTERNACIONAL LOGISTICA EN INYECCIÓN**

Camí Vell de Silla nº14, 46469  
Beniparrell.  
Valencia, España

ILI GROUP has a total Surface of **16.624 m<sup>2</sup>**





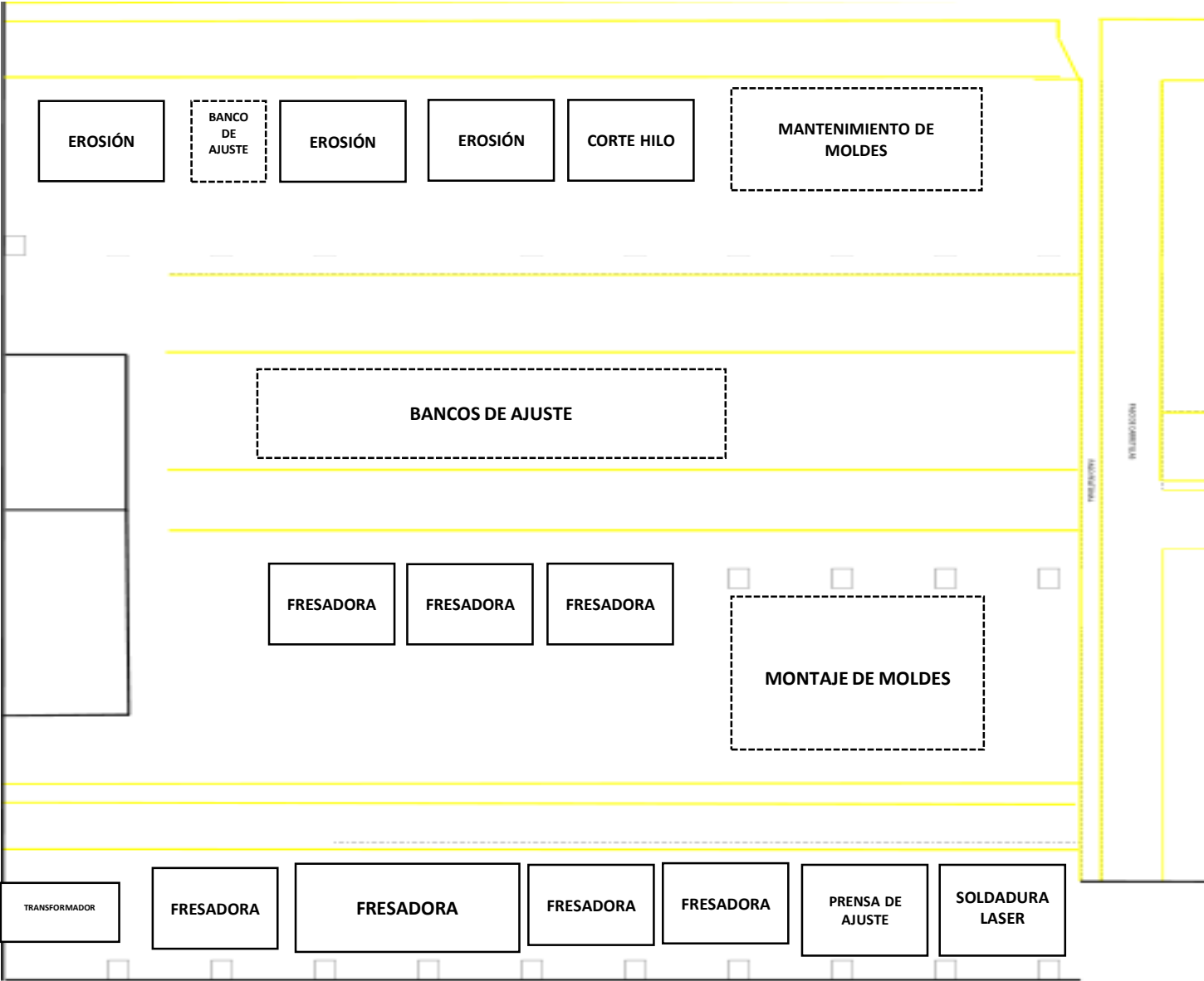
INJECTION,  
ASSEMBLY AND  
HOT STAMPING





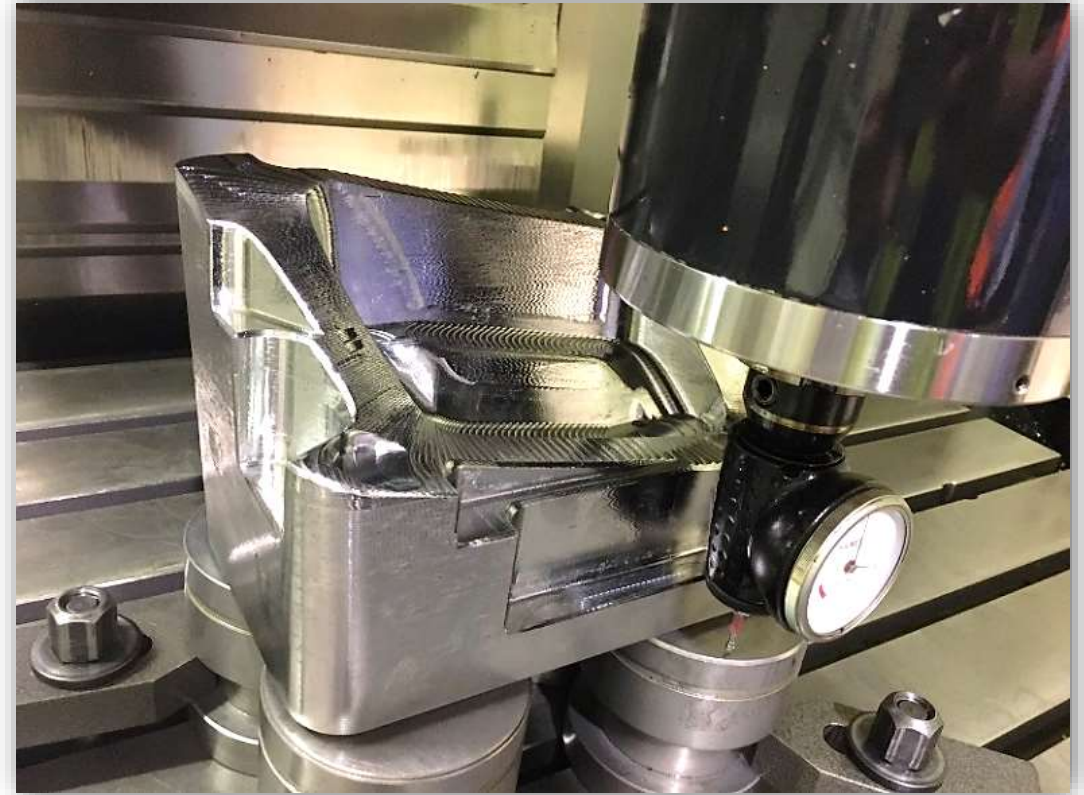






TOOL SHOP













### TECNOLOGÍAS USED AT ILI

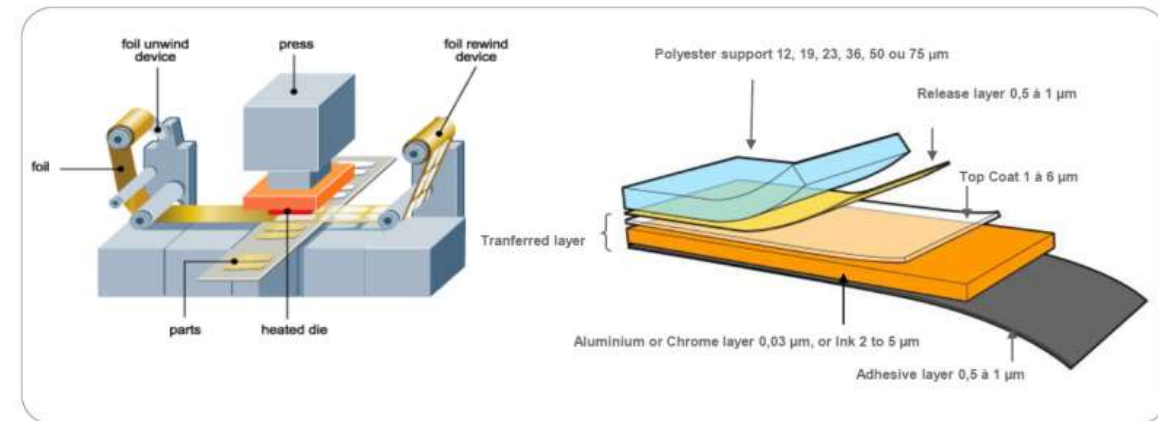
- ❑ **Plastic injection:** PP, ABS, PA, TPE, ASA, PC, POM
- ❑ **2k injection:** Plastic y EPDM
- ❑ **Hot Stamping:** decorative parts
- ❑ **Assembled parts :**
  - Radiator Grilles, Lower grilles, emblems
  - Sensors
  - Different components (clips, foams, etc.....)







Hot stamping is a dry transfer of a thin metallic or pigmented layer onto a plastic surface. The aluminum foil holding the decoration is unrolled over the area to be decorated. The transfer is ensured by the pressure and temperature of a stamp, applied to the area to be decorated.











**I+D:** New raw materials

**Description:** Materials developed in collaboration with a specialized German partner. They have different applications to eliminate painting processes or offer new aesthetic and technical solutions

**Examples:** high gloss and backlight



# EQUIPMENT

## INJECTION MACHINES

- 1 Machine TOYO PLASTAR H300E=46 ELECTRICA 180Tn
- 1 Machine ENGEL 1050/200V/200HL-2F 200Tn
- 2 Machine TOYO PLASTAR K600D-ELECTRICA 280Tn
- 1 Machine TOYO PLASTAR K600D ELECTRICA 450Tn
- 1 Machine WOOJIN DL 450 450Tn
- 1 Machine BATENFEL 5500/4500 550Tn
- 1 Machine DEMAC TECH 500/3000 550Tn
- 1 Machine ENGEL DUO 3550/800 800Tn
- 1 Machine HT IMM 800GOLD 800Tn
- 1 Machine BMB BIMATERIA KW 850/3450/700 850Tn
- 1 Machine BMB-KW 5500 850Tn
- 1 Machine WOOJIN DL A5 1050Tn
- 2 Machine ENGEL DUO 7050 1100Tn
- 1 Machine KW1050/8500 HYBRID 1150Tn
- 1 Machine BMB-KW 1200/8500 1200
- 1 Machine HT IMM 1200 GOLD 1200Tn
- 1 Machine WOOJIN DL 1700 A5-V2-IH 1600Tn











### Laboratory scope



- THREE-DIMENSIONAL MACHINE
- SINGLE PLATE DIGITAL SCALE
- PIECE COUNTING SCALE (PLATFORM A)
- BI-PLATFORM DIGITAL SCALE (PLATFORM B)
- BYK GARDNER 60° GLOSS METER
- SPECTROPHOTOMETER - colorimeter
- HUMIDITY DETERMINATOR
- SHORE A HARDOMETER
- SHORE D DUROMETER
- THICKNESS GAUGE QUALITY DEPARTMENT
- LUXOMETER TES 1330A (ILLUMINANCE METER)
- OUTDOOR MICROMETER
- PROFILE PROJECTOR
- "TESTO" THERMOHYGROMETER
- FLUKE 53 IIB DIRECT READING THERMOMETER
- ANALOG CALIPER 500 mm
- DIGITAL CALIPER 1000 mm (0.01 mm)
- DIGITAL CALIPER 300 MM MIUTOYO
- HOLEX DEPTH PROBE
- DIGITAL CALIPER 300mm
- DIGITAL THICKNESS TESTER

# DESIGN TOOLS/ PROJECT MANAGEMENT



## MACHINERY MAINTENANCE AND REPAIR OF MOLDS

- 7 CNC
- 4 electroerosion
- 1 wire EDM machine
- 1 Adjustment press
- 1 lathe
- 1 flat surface rectifier
- 1 sandblasting cabin

## MACHINERY MAINTENANCE AND REPAIR OF MOLDS

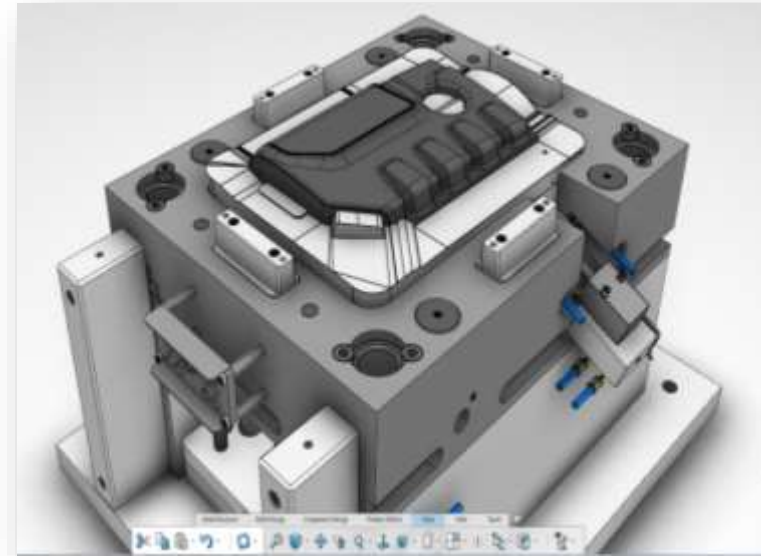
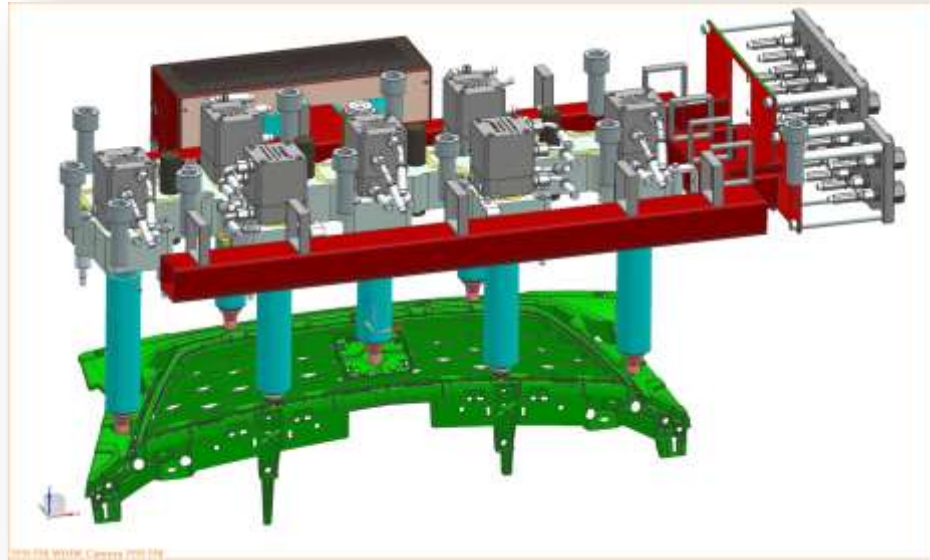
- 1 Laser Welding

## ENGINEERING AND DEVELOPMENT

- NX UNIGRAPHICS
- CAD – CAM
- CATIA

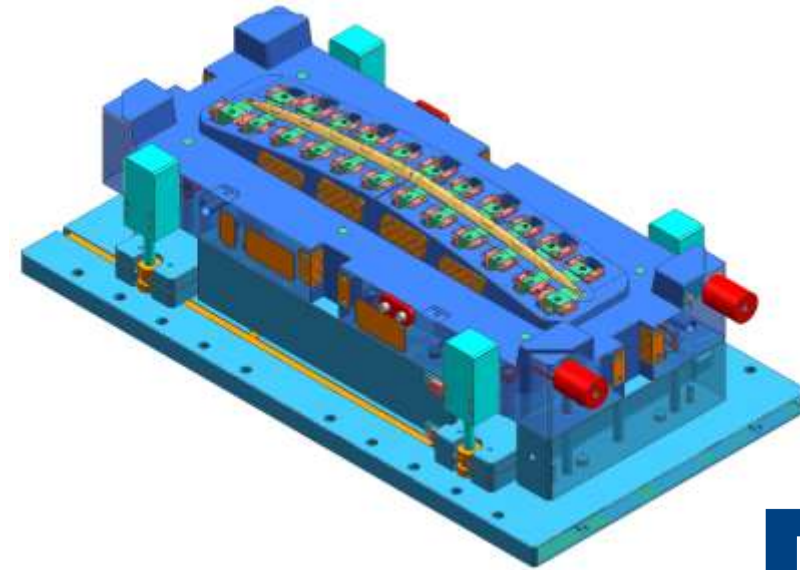


## 5. DESIGN TOOLS/ PROJECT MANAGEMENT

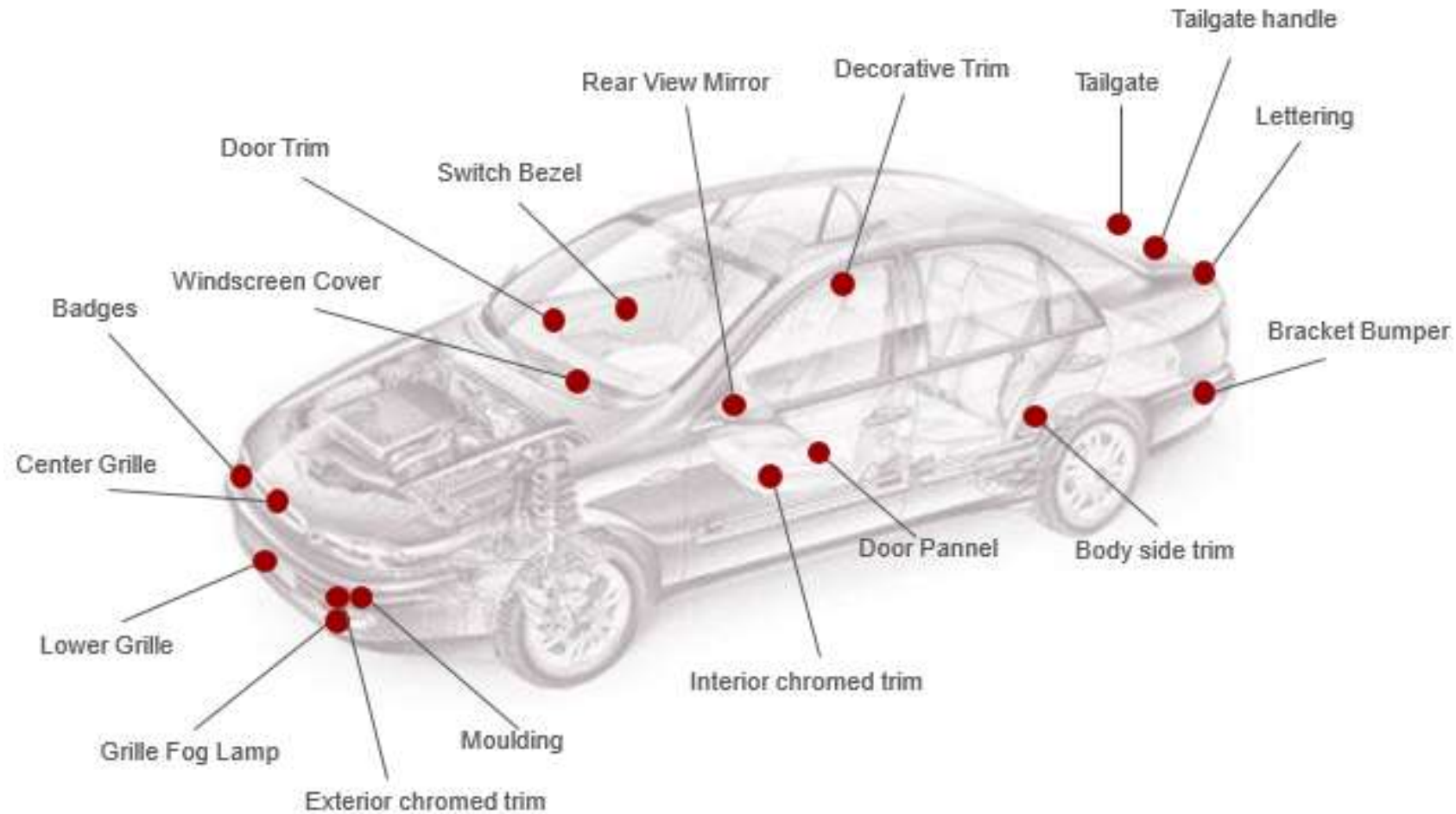








### PRODUCT LOCATION





### LAST DEVELOPMENTS:

#### Front Bumper Decorative parts

- SE216PA (Arona)
- SE326PA (Ateca)



#### Front Bumper Painted parts

- SE216PA (Arona)
- SE326PA (Ateca)



#### Hot Stamping grilles

- SE216PA (Arona)
- SE326PA (Ateca)



#### High gloss injection

- SE216PA Cupra version



#### Interior chrome parts

- Maserati Ghibli III (M157)
- Daimler (Vito/Viano)









### LAST DEVELOPMENTS INDUSTRY SECTOR:



## 6. ORGANIZATION CHART



01/03/2024

Organigrama GENERAL  
INTERNACIONAL LOGÍSTICA  
EN INYECCIÓN

